

Fabric Care

This refers to pre-shrinking the fabric and pressing it before you begin.

Resizing the pattern

To resize a pattern you can trace your pattern onto 'cross and dot paper' and then go around the outline with a ruler making the necessary adjustments, an example of 'cross and dot' paper is over the page.

Marking the pattern

Remember when marking the pattern to leave a seam allowance of about 10mm, if you are planning to make a number of copies it is a good idea to make a template, some examples are over the page.

Cutting

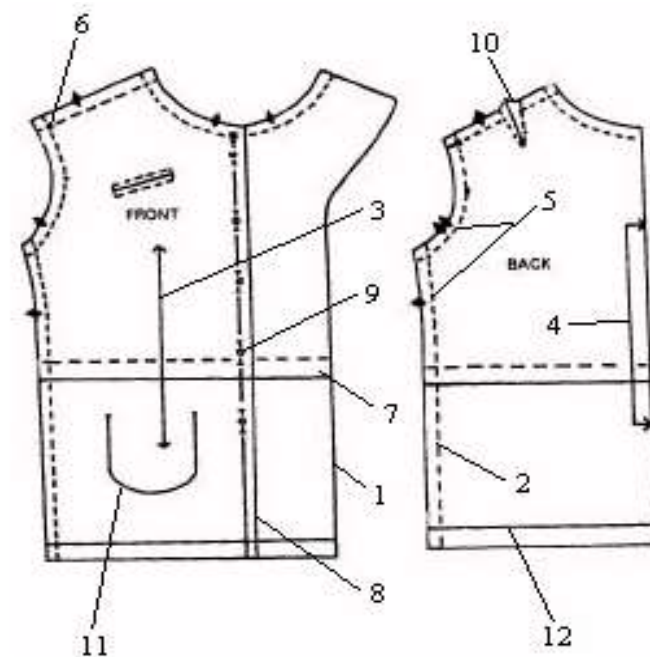
Place pattern on fabric with straight-of-grain lines parallel to salvage. Straight grain refers to the threads of fabric which run parallel to the salvage edge. Look at a pattern piece and you will see a line with arrow ends (usually near the center of the piece). This is the straight-of-grain marking that you will be measuring to the salvage edge of the fabric, so that your garment will be on the straight grain of the fabric.

Notches

The directions bring up a point about cutting the notches outward. You will see these notches on the edge of pattern pieces. Many times people cut these notches inward. This will weaken the amount of strength in your seam. They should be cut outwards as the pattern instructs.

Next the directions detail cutting one layer of fabric at a time and how to turn over the pattern pieces. This will be necessary if you have 45" wide fabric. This is important or you could end up cutting out two left sides. Mark your traced pattern if necessary so that you can see the difference in the sides of the pattern pieces.

PATTERN SYMBOLS



Pattern symbols:

1. - Cutting line
2. - Stitching line
3. - Grain arrow
4. - Place on fold line
5. - Notches
6. - Circles and squares
7. - Lengthen and shorten line
8. - Fold line
9. - Button and buttonhole placements
10. - Dart placement
11. - Pocket placement
12. - Hemline